

ADMINISTRATIVE PARCELS — GUADALUPE HILLS

Planning Area: Guadalupe Hills (1)

Administrative Parcel: Guadalupe Canyon Parkway (10)

Location and description: Guadalupe Canyon Parkway is a major road which bisects the San Bruno Mountain area. It begins at Bayshore Boulevard in Brisbane and continues to Mission Boulevard in Daly City. Within the Guadalupe Hills planning area it divides the Rio Verde parcels from the Northeast Ridge parcel and the State Park portion of the park from the County Park portion (Figures 1-20 A-C). The cut and fill slopes have been invaded by several plant species including annual grasses, lupines, gorse, eucalyptus pampas grass, baccharis, and fennel.

Ownership: The road is under the ownership of San Mateo County and is maintained by the San Mateo County Department of Public Works.

Project: Maintenance of drainage and existing slopes are done when needed. In addition, re-surfacing is done every 10-15 years (Bob Sans, pers. comm.).

Status: This is an planned parcel.

Biological Issues: Many of the cut and fill slopes which have been invaded by lupines and other butterfly host plants are used by both the Mission Blue and the Callippe (See Figures 1-10 D-E). The invasion of exotics into the roadcuts is a concern as they serve as barriers to this corridor use. Where possible, the slopes should be planted with native species, including the butterfly host plants as this would enhance the corridors, increase habitat area and help prevent excessive erosion.

Impact: Current maintenance practices will have little impact on the species of concern, unless slope maintenance destroys major habitat areas.

HCP Objectives - Specific Conservation Needs: The HCP approach to Guadalupe Canyon Parkway is to improve the quality of the habitat on the cut and fill slopes in order to expand the habitat area and increase their corridor value.

In order to make the road more useful as habitat for both butterflies, invading exotics on the cut and fill slopes should be eliminated and the slopes replanted with host plants and other low growing native species. This may have to be accomplished in phases so that large slope areas are not left open to erosion.

Operating Program

Obligations: The San Mateo County Department of Public Works has the following obligations:

1. Participation in the regulatory provisions of the HCP.
2. Notify the Plan Operator of any changes in maintenance practices or proposed grading of the road.
3. Obtain approvals of any proposed changes in plans or other uses which would alter the current state of the parcel as required by Chapter Five (F) (4).

ADMINISTRATIVE PARCELS — GUADALUPE HILLS

The Plan Operator has the following obligations:

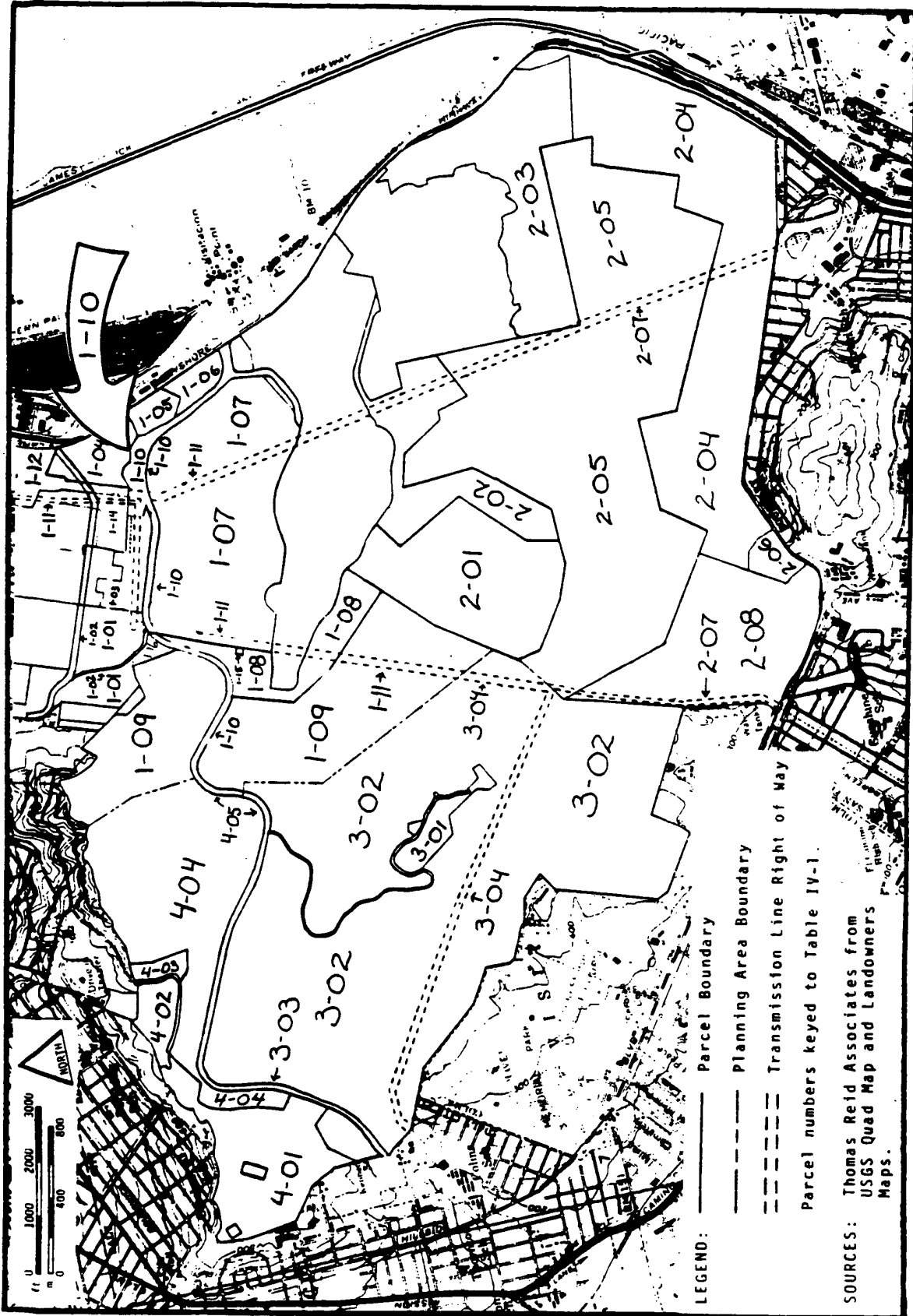
1. Execution of the Operating Program for Management Unit 1-10-01.
2. Timely response to the Public Works Department's submittal of plans which require Operator review and approval.

Management Units:

1. 1-10-01. This unit contains the entire length of Guadalupe Canyon Parkway in the Guadalupe Hills Planning Area, and includes the cut and fill areas on both sides of the road.

- a. Eliminate or thin patches of exotics in order to open up corridors to other habitat areas.
- b. Replant the areas in (a) and existing slopes which lack host plant species, with native species, particularly host plants.
- c. Upon completion of (a) and (b) above monitor the area for success of the habitat enhancement.

FIGURE 1-10 A, GUADALUPE CANYON PARKWAY
PARCEL LOCATION



LEGEND: — Parcel Boundary
 - - - Planning Area Boundary
 - - - - - Transmission Line Right of Way
 Parcel numbers keyed to Table IV-1.

SOURCES: Thomas Reid Associates from
 USGS Quad Map and Landowners
 Maps.

FIGURE 1-10 B, GUADALUPE CANYON PARKWAY
PARCEL TOPOGRAPHY

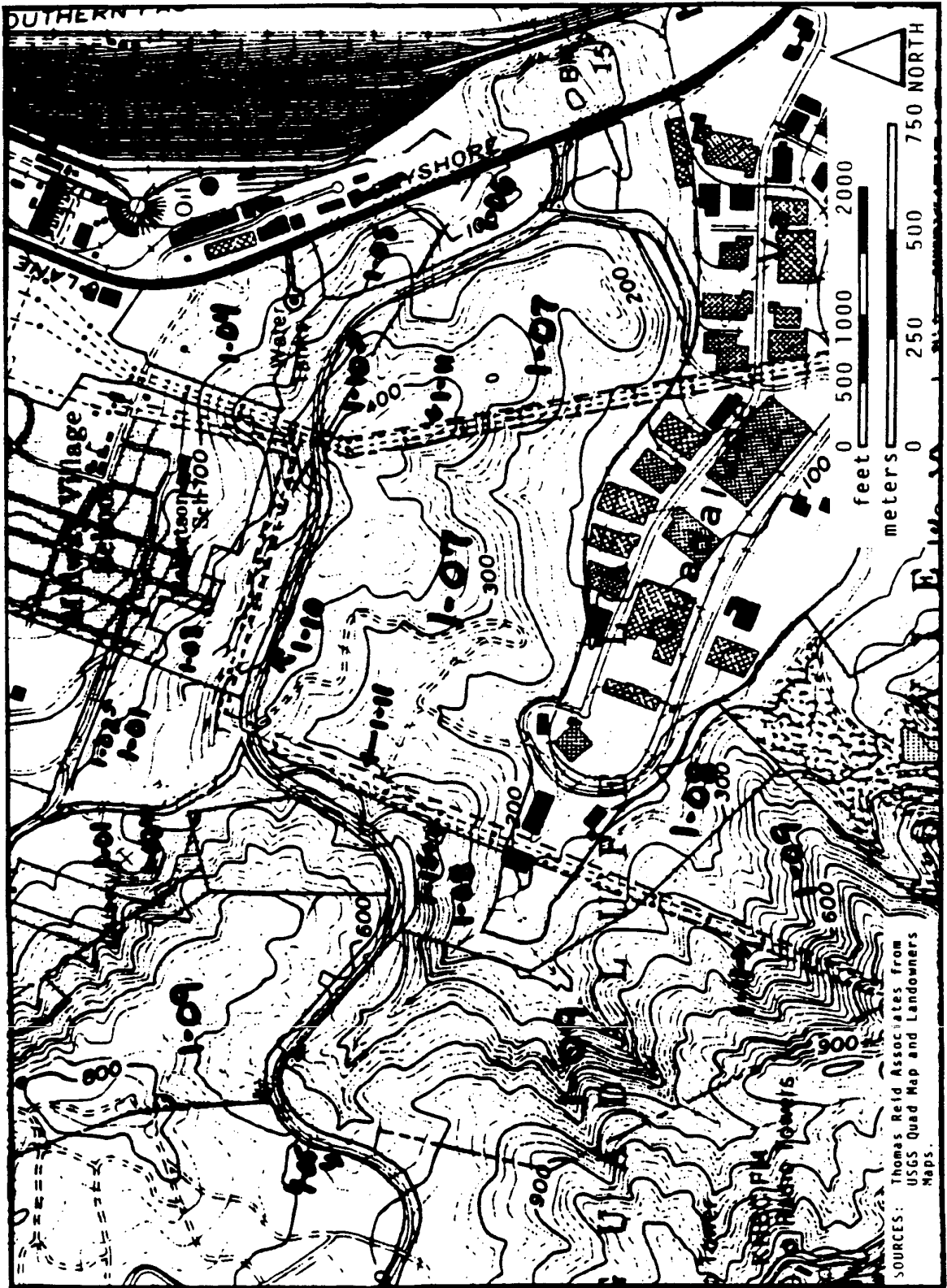


FIGURE 1-10 C, GUADALUPE CANYON PARKWAY
MANAGEMENT UNITS

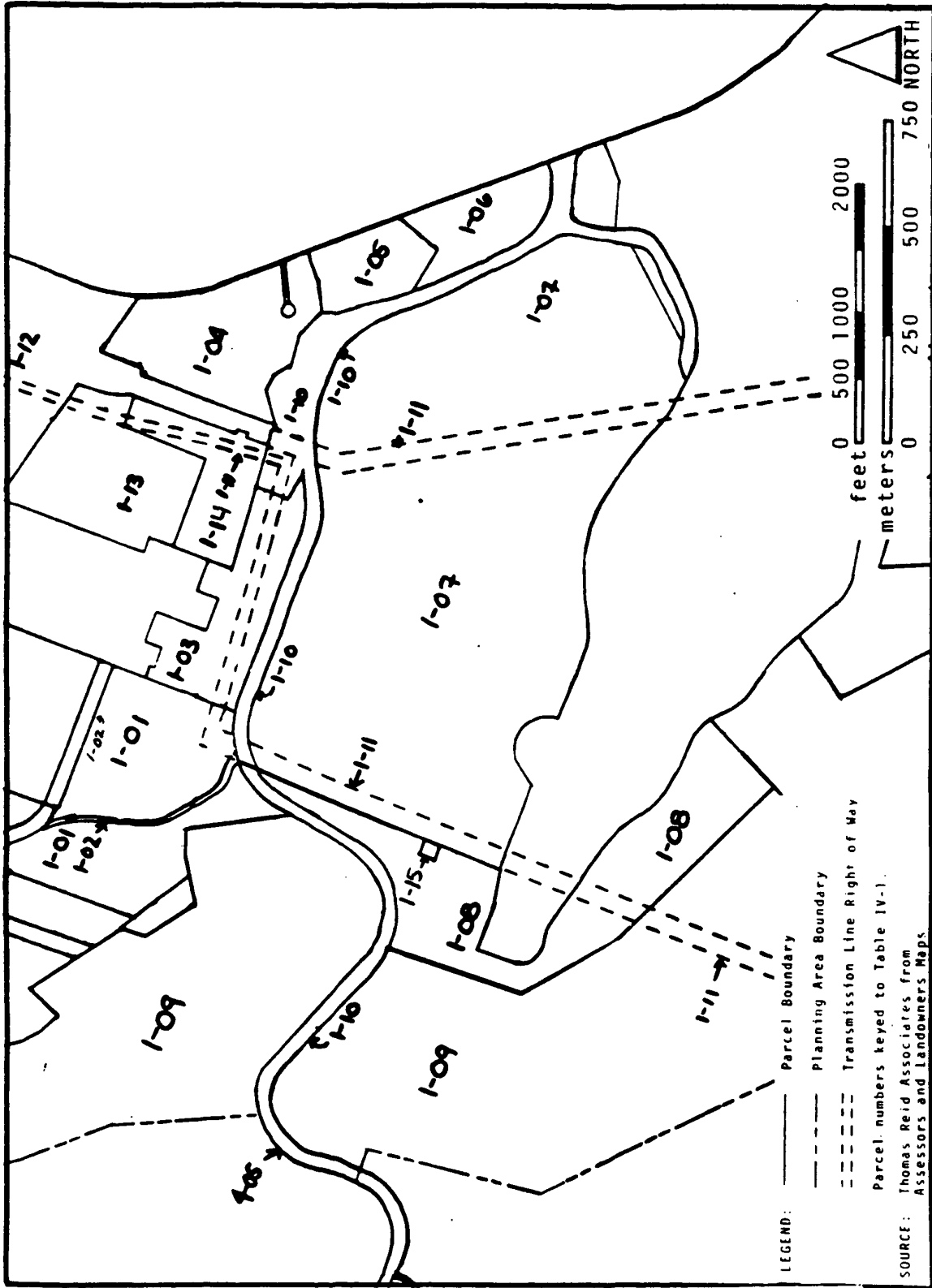


FIGURE 1-10 D, GUADALUPE CANYON PARKWAY
GENERAL POPULATION AND HABITAT DISTRIBUTION, 1981 -- MISSION BLUE

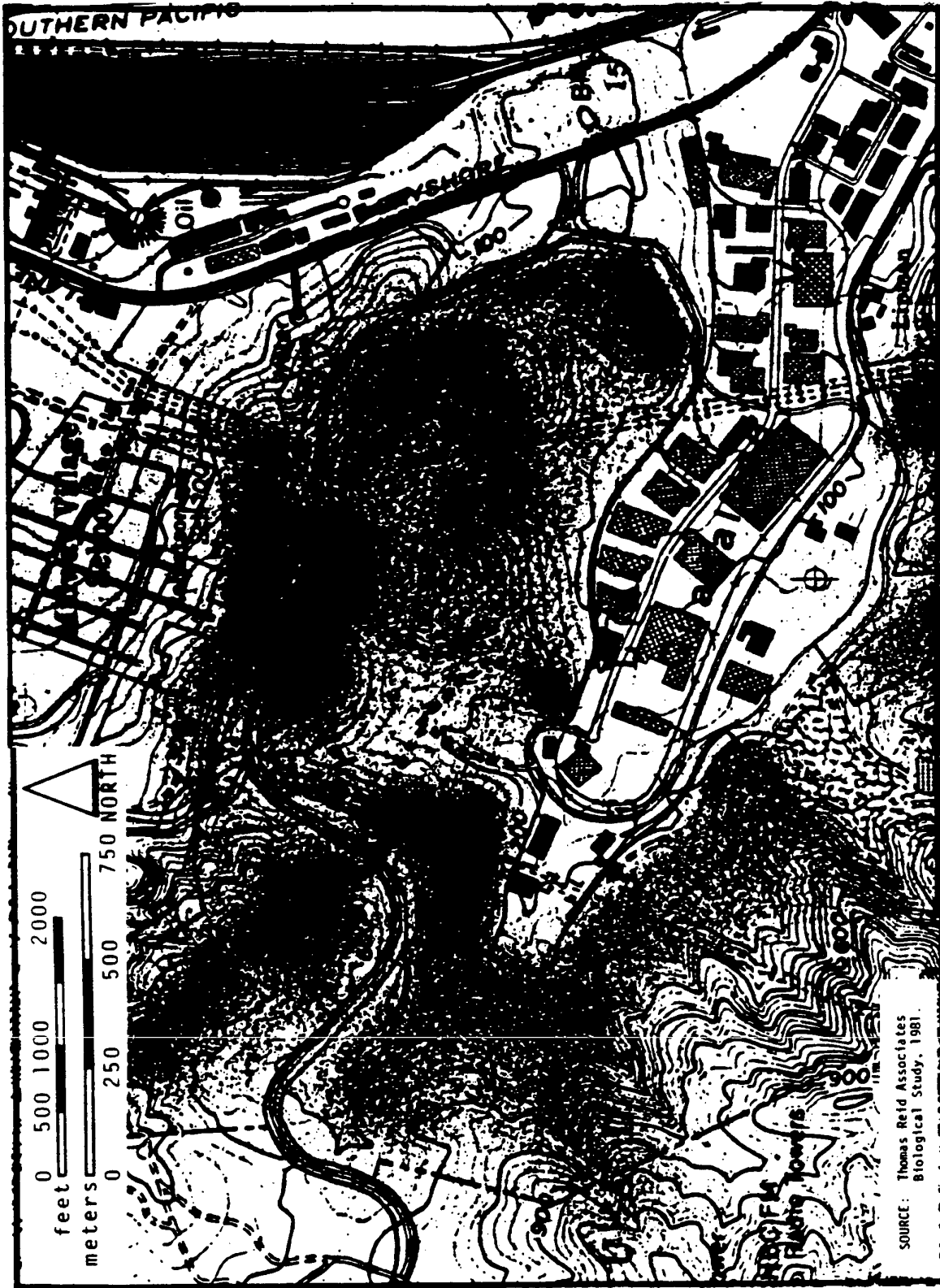


FIGURE 1-10 E, GUADALUPE CANYON PARKWAY
GENERAL POPULATION AND HABITAT DISTRIBUTION, 1981 -- CALLIPPE SILVERSPOT

