

ADMINISTRATIVE PARCELS – GUADALUPE HILLS

Planning Area: Guadalupe Hills (1)

Administrative Parcel: Water Pipelines (13)

Location and description: The San Francisco Water Department operates and maintains two water pipelines on San Bruno Mountain; these are the Crystal Springs Pipe Lines, numbers 1 and 2. Within the Guadalupe Hills Planning Area, they pass through Parcels W, X, Y, Z, Robertson School, and PG&E Fee administrative parcels. The lines are buried underground within a utility right-of-way. In addition, there are air valves protruding above ground in various places along the lines. See Figures 1-13 A-C.

Ownership: San Francisco Water Department (SFWD)

Project: According to Gilbert Bendix, Manager of Suburban Operations, the waterpipes require a minimal amount of maintenance; in fact, except in the case of an emergency, there may not be major maintenance work required for 10 years or more.

Status: This parcel is unplanned.

Biological Issues: Rare and endangered species habitat is found on and around areas within the water pipeline rights-of-way (Figures 1-13 D-E). Within this planning area, the pipeline area comprises approximately 9 acres and contains habitat for .06% of the Callippe Silverspot and less than .01% of the Mission Blue population.

Impact: Impacts on rare and endangered species will vary depending on location and type of activity taking place. Since activities arise due to a specific problem, they are unknown at this time, and as such can not be evaluated. However, an estimate of total impact in the event the entire pipeline area has to be unearthed, can be made. Within the area of both Crystal Springs Lines 1 and 2, the estimated destruction of habitat on the endangered Mission Blue butterfly brought about by unearthing the entire stretch of pipeline (at a 35 foot width) is less than .01%, while the impact on the Callippe habitat is estimated to be .02% of the population for Pipeline #1 and .04% for #2. The SFWD has no plans to unearth any portions of the pipeline at this time or in the near future. Any emergency repairs would have a significantly lower impact than that stated above.

HCP Objectives - Specific Conservation Needs: With Habitat Manager supervision impacts on the species of concern can be avoided or minimized depending on the type of activity. The primary objective for this administrative parcel is to gain the SFWD's cooperation in informing the Plan Operator of activities taking place within conserved habitat areas of the Mountain. Mr. Bendix has indicated that the SFWD would cooperate with the Plan Operator.

ADMINISTRATIVE PARCELS – GUADALUPE HILLS

Operating Program

Obligations: San Francisco Water Department has the following obligations:

1. Compliance with the mitigation measures set forth for Management Unit 1-13-01.
2. Participation in the regulatory provisions of the HCP.
3. Submit a detailed access and maintenance plan to the Plan Operator.
4. Obtain approvals of any changes in land use or other uses which would alter the current state of the parcel as required by Chapter Five (F) (4).
5. Under non-emergency situations notify the Plan Operator of all maintenance activities which may encroach into the conserved habitat area. Routine line patrols which will not impact conserved habitat are excluded from this notification requirement.
6. If unforeseen requirements for adding new water lines or facilities arise, notify the Plan Operator of the proposed activity and give the Habitat Manager a detailed drawing of the areas where the activities will take place. Incorporate Plan Operator suggested design changes into proposed project.

The Plan Operator has the following obligations:

1. Respond to SFWD's submittal of information which require Operator review and approval within 10 working days.
2. Advise SFWD where to obtain recommended species for revegetation of disturbed areas.
3. Work with SFWD's Millbrae Office to determine the appropriate habitat treatment for the utility corridors.
4. Review detailed drawings for unforeseen activities relating to the addition of water lines or facilities within 30 days. If necessary suggest modifications to reduce impacts on conserved habitat.

Management Unit:

1. **1-13-01.** This unit contains the entire length of both pipelines in the Guadalupe Hills Planning Area.
 - a. Maintenance activities should be kept to existing disturbed areas where feasible (i.e. roads and dirt trails).
 - b. New disturbance to conserved habitat should be avoided or minimized.
 - c. SFWD maintenance personnel should consult with the Habitat Manager so that any new disturbance can avoid particularly sensitive habitat areas. During emergency situations (i.e. leakages) this may not be possible.
 - d. Disturbed areas should be revegetated with plant species approved by the Plan Operator.

FIGURE 1-13 A, WATER PIPELINES
PARCEL LOCATION

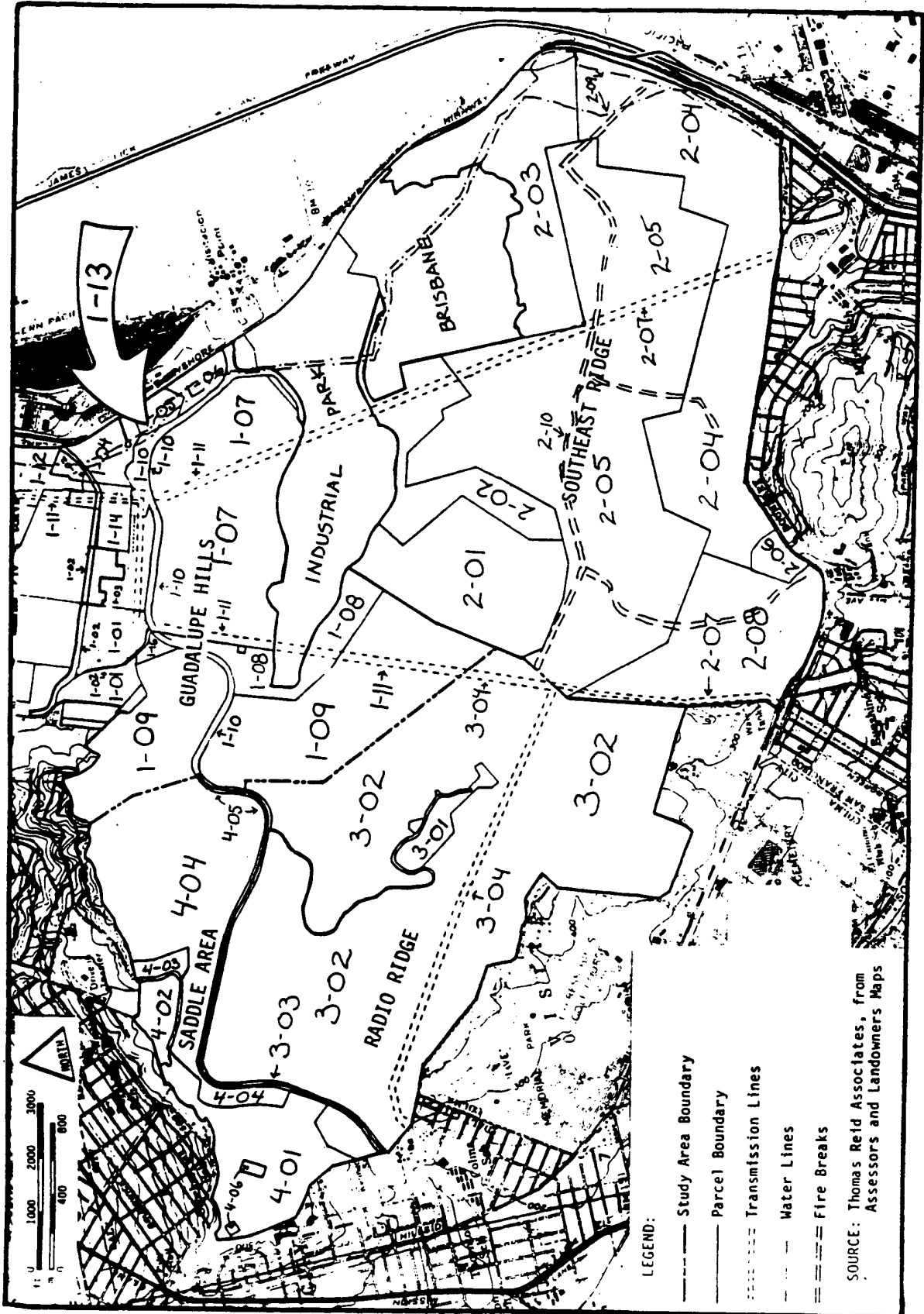
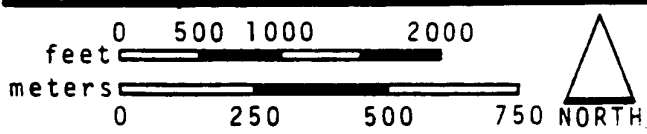
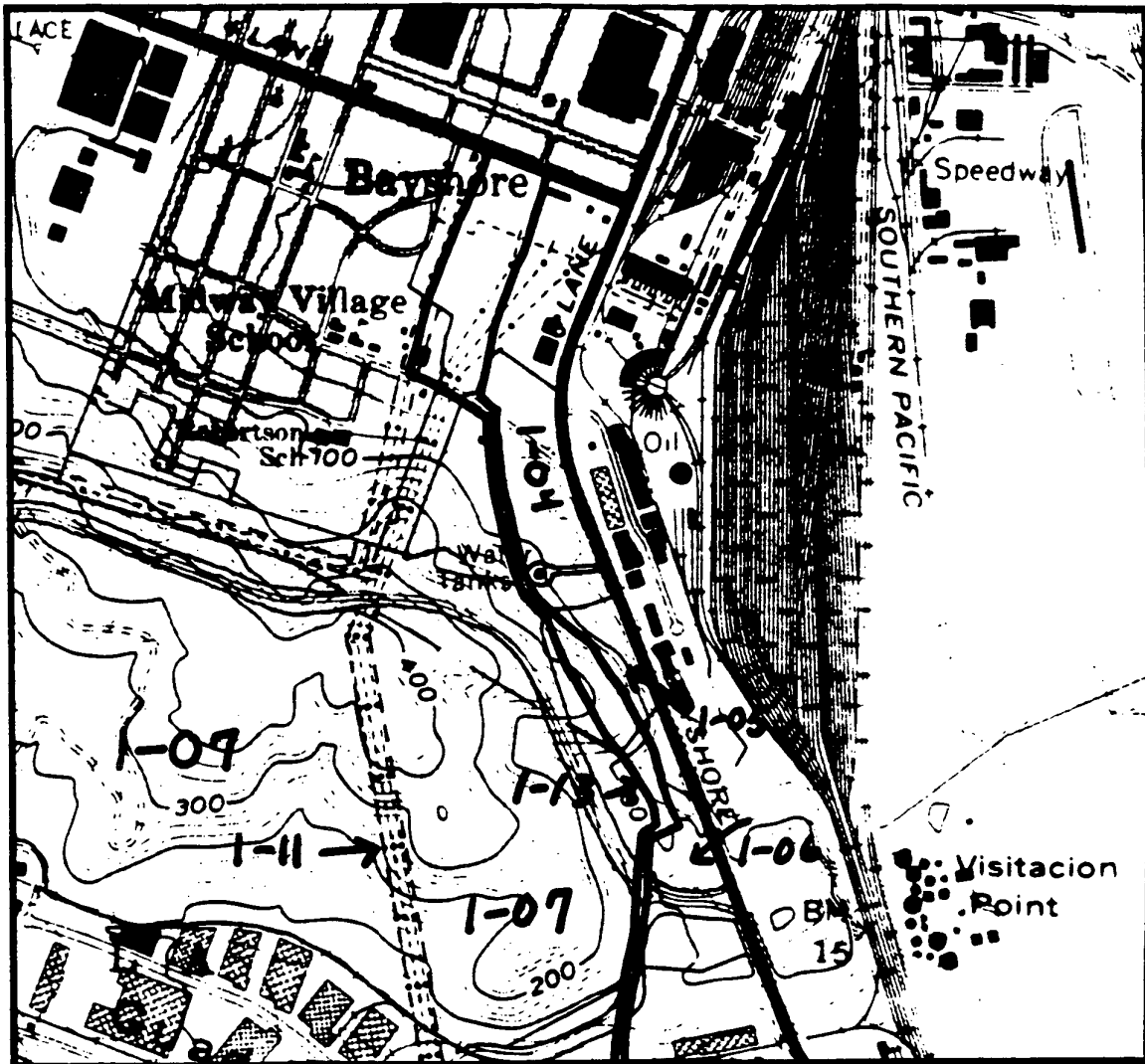
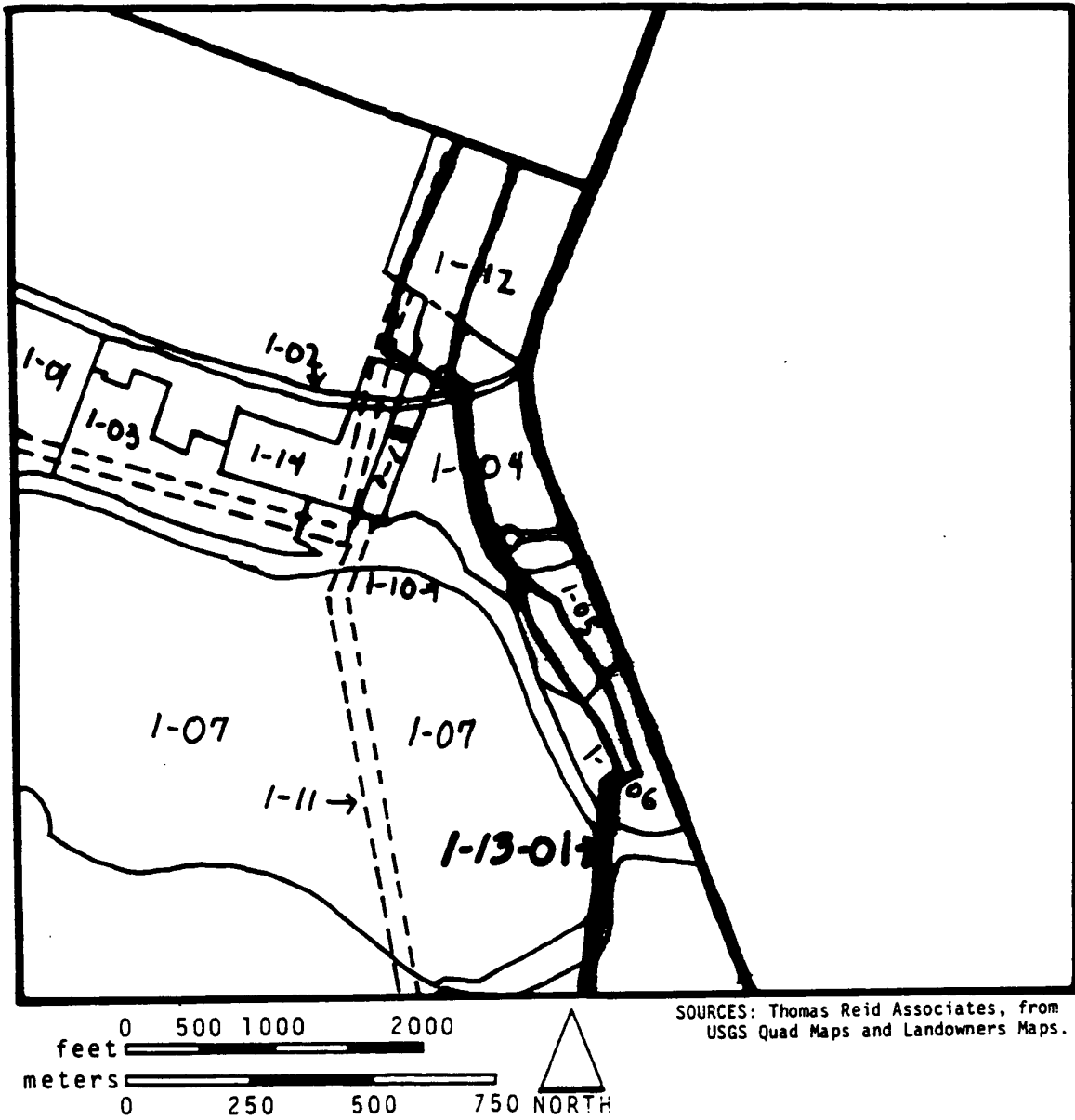


FIGURE 1-13 B, WATER PIPELINES
PARCEL TOPOGRAPHY



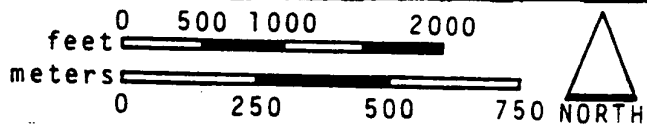
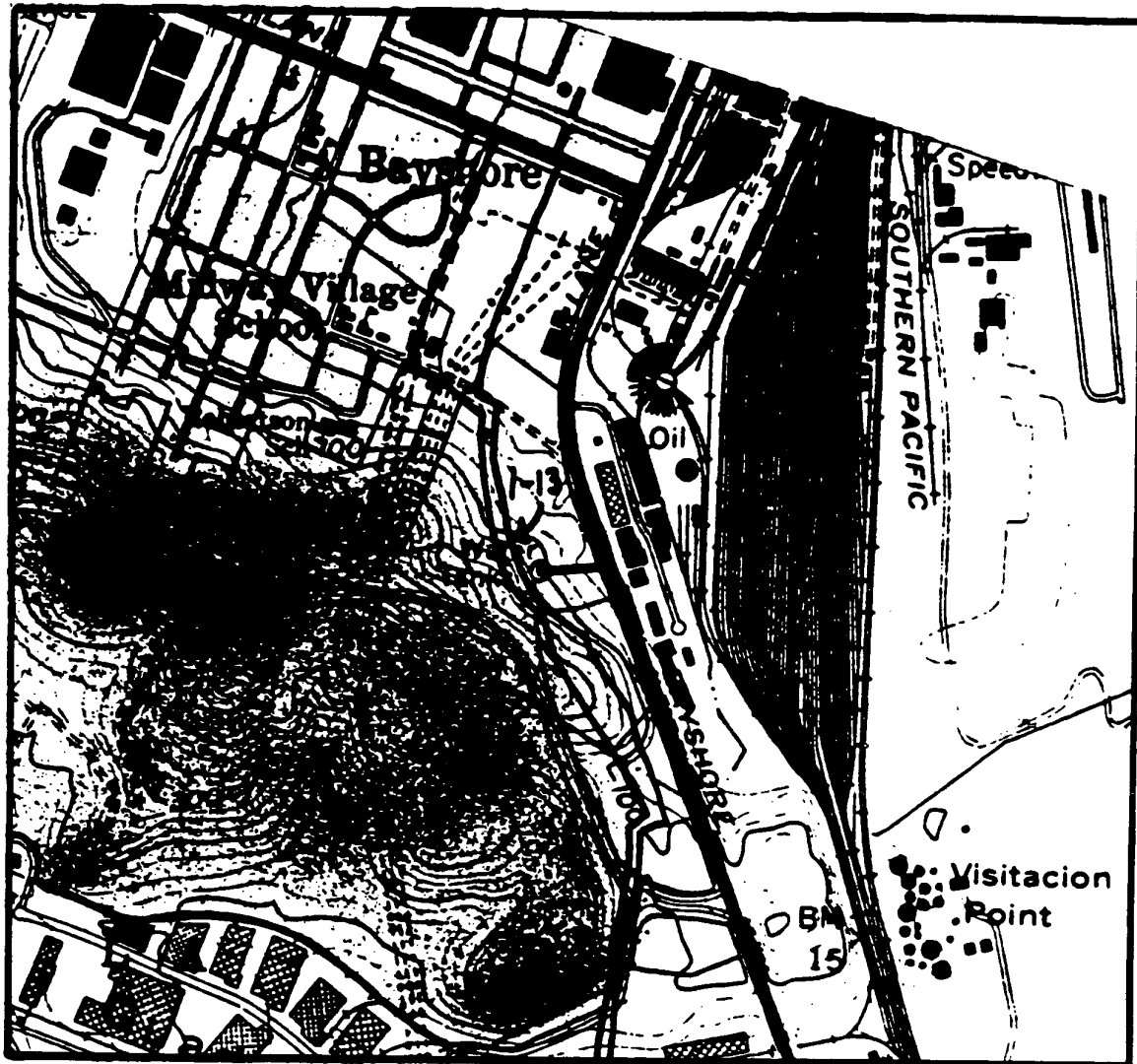
SOURCES: Thomas Reid Associates from
USGS Quad Maps and Landowners Maps.

FIGURE 1-13 C, WATER PIPELINES
MANAGEMENT UNITS



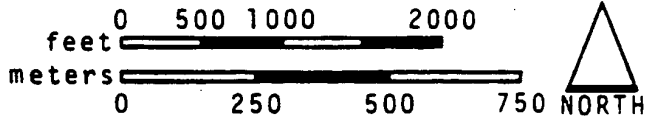
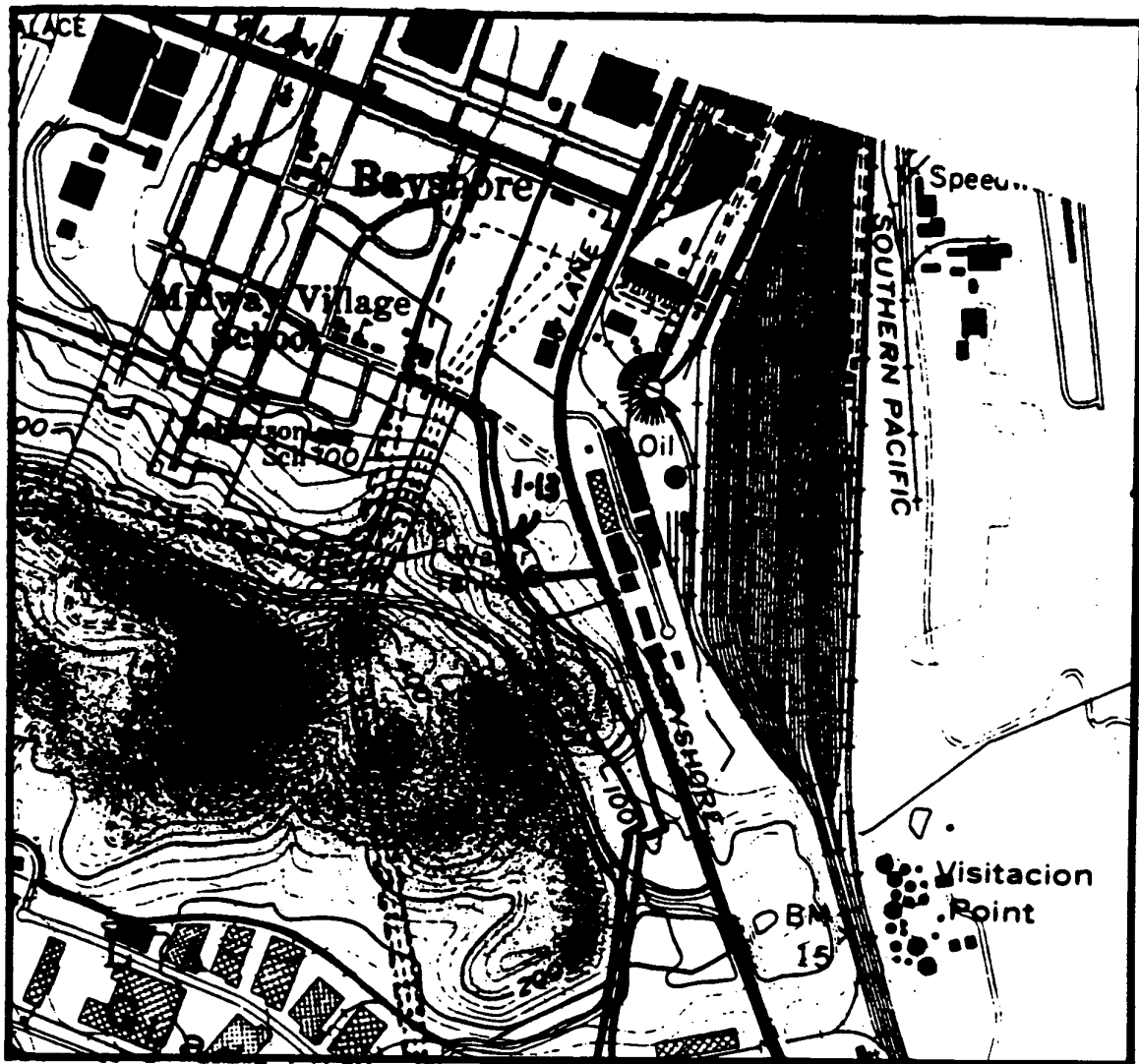
SOURCES: Thomas Reid Associates, from
USGS Quad Maps and Landowners Maps.

FIGURE 1-13 D, WATER PIPELINES
GENERAL POPULATION AND HABITAT DISTRIBUTION, 1981 -- MISSION BLUE



SOURCE: Thomas Reid Associates,
Biological Study, 1981.

FIGURE 1-13 E, WATER PIPELINES
GENERAL POPULATION AND HABITAT DISTRIBUTION, 1981 -- CALLIPPE SILVERSPOT



SOURCE: Thomas Reid Associates,
Biological Study, 1981.