

PROPOSED REVISED OPERATING PROGRAM FOR PARCEL V

Planning Area: Guadalupe Hills (1)

Administrative Parcel: Parcel V (16)

Location and description: This three acre parcel is surrounded on all sides by Guadalupe Canyon Parkway, the Rio Verde Estates parcel, and State park lands. (See Figure 1-16 A-C).

Ownership: Parcel V is owned by Visitacion Associates.

Project: As a condition of the Northeast Ridge Equivalent Exchange Amendment to the HCP approved by the U.S. Fish and Wildlife Service in August 1990, this parcel must be designated as Conserved Habitat. This will help ameliorate the effects of narrowing the movement corridor between the main mission blue butterfly populations and those butterflies on the Northeast Ridge.

Status: This is an planned parcel.

Biological Issues: This parcel contains important habitat for the Mission Blue and Callippe Silverspot. (See Figures 1-16 D-E).

Impact: None.

HCP Objectives -- Specific Conservation Needs: Designate this parcel as Conserved Habitat to maintain a habitat corridor along Guadalupe Canyon Parkway at the Carter Street intersection.

Operating Program

Obligations: Visitacion Associates has the following obligations:

1. Dedicate the entire parcel to the County for Conserved Habitat:

The Plan Operator has the following obligations:

1. Provide a timely response to the needs of the landowner with regard to HCP requirements.

Management Units:

1. 1-16-01. This unit contains the entire parcel.
 - a. Control the spread of exotic species on this parcel as necessary.

FIGURE 1-16 A, PARCEL V
 PARCEL LOCATION

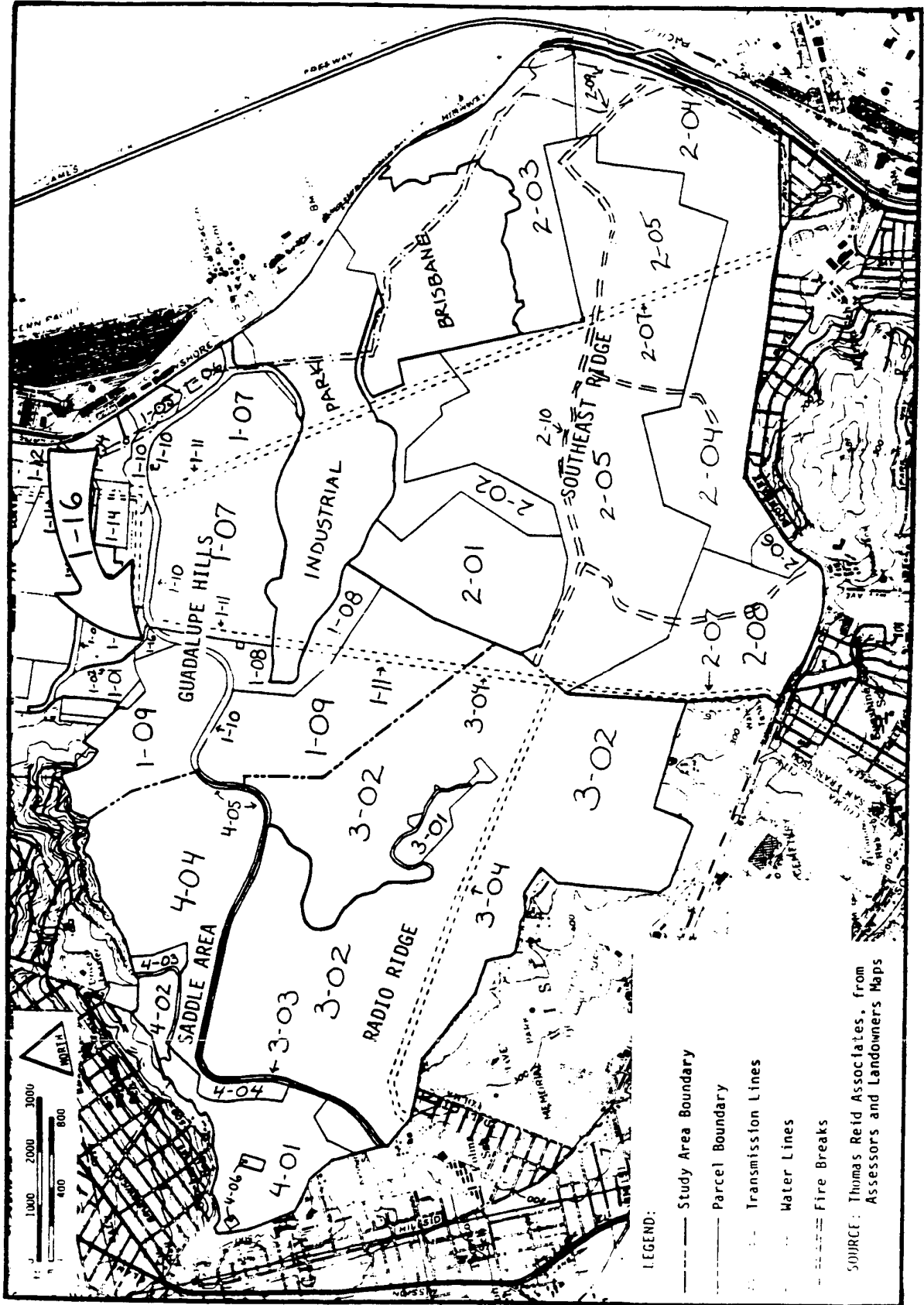


FIGURE 1-16 B, PARCEL V
PARCEL TOPOGRAPHY

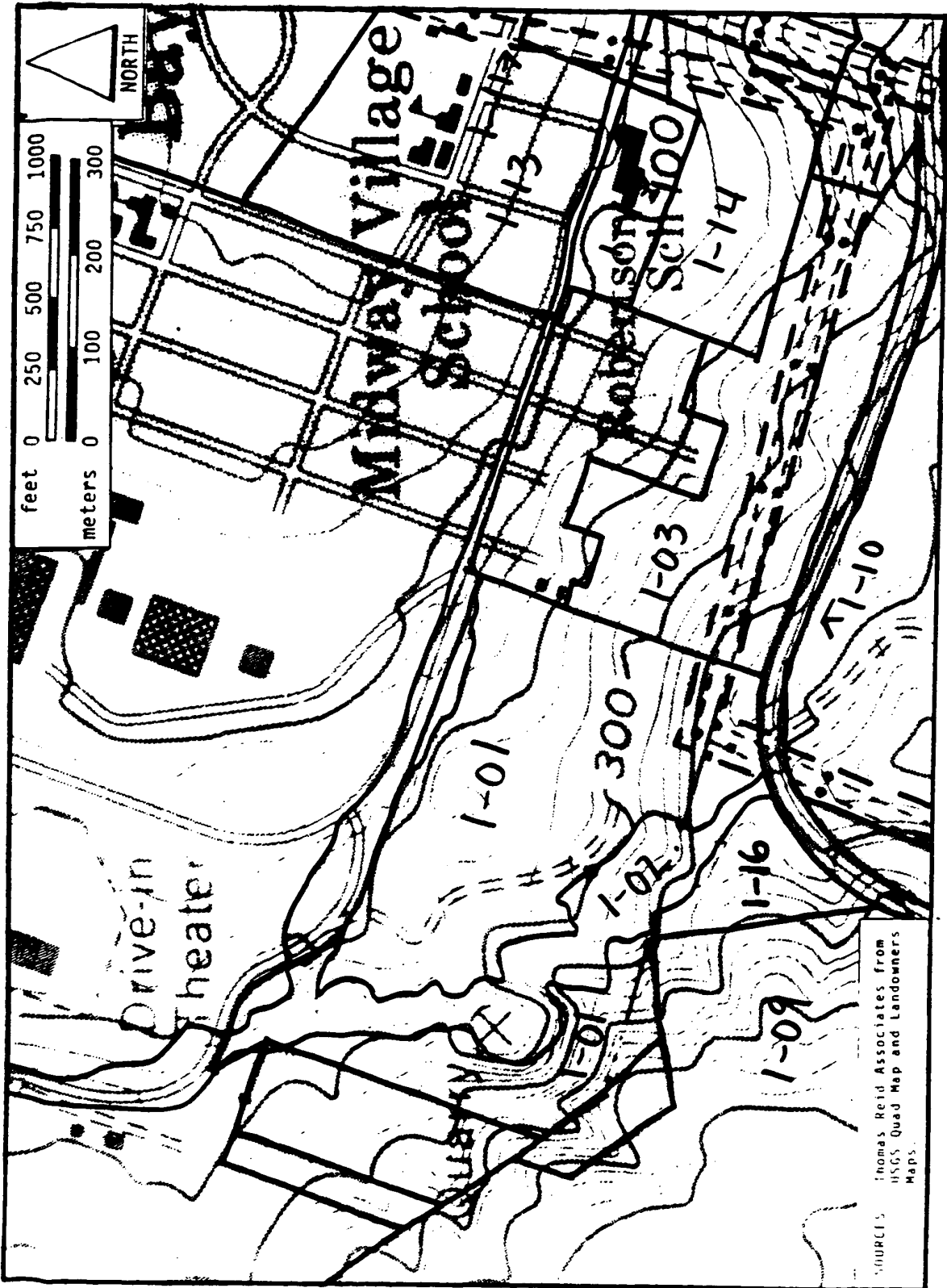


FIGURE 1-16 C, PARCEL V
MANAGEMENT UNITS

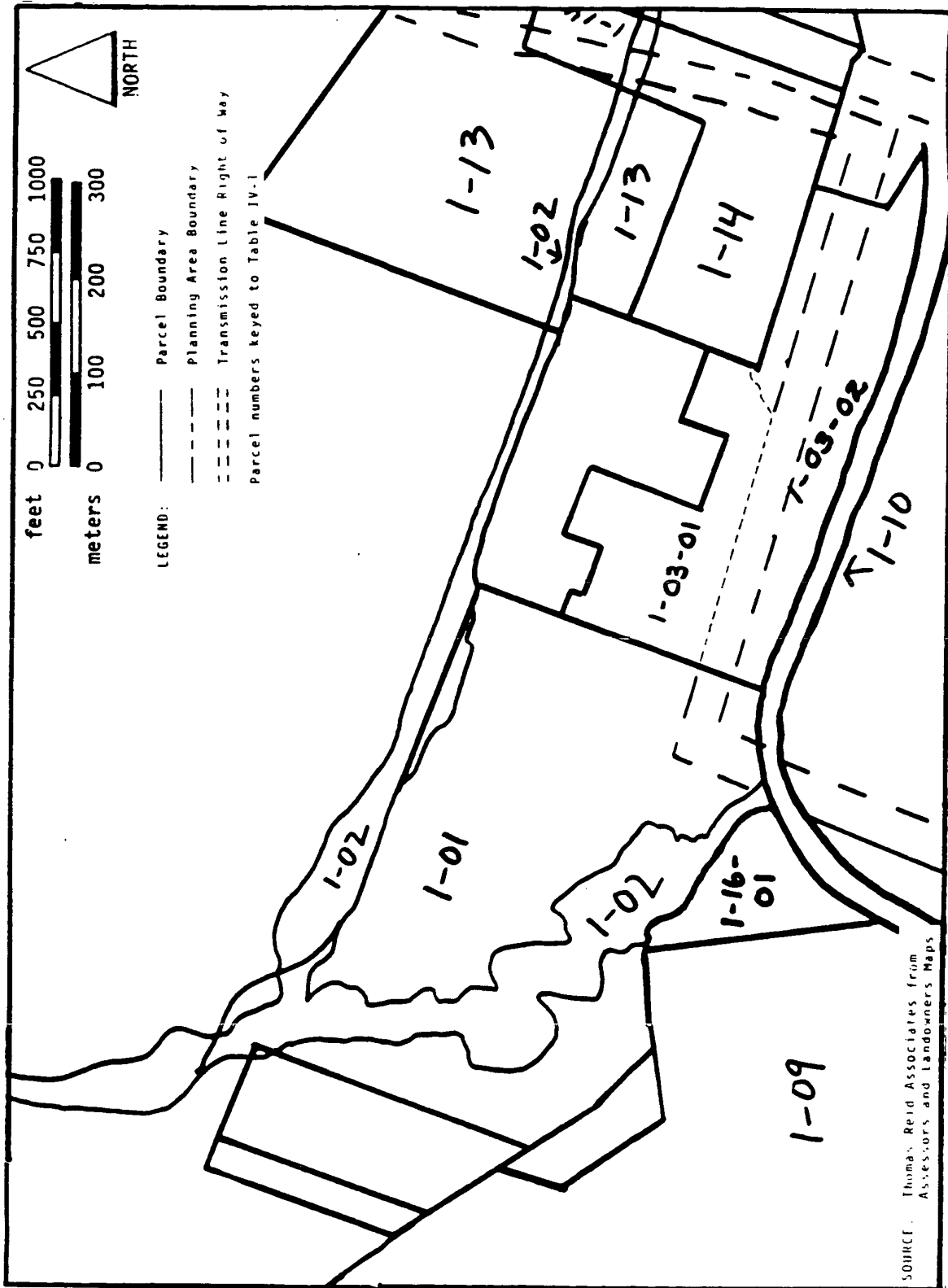


FIGURE 1-16 D, PARCEL V
GENERAL POPULATION AND HABITAT DISTRIBUTION, 1981 -- MISSION BLUE

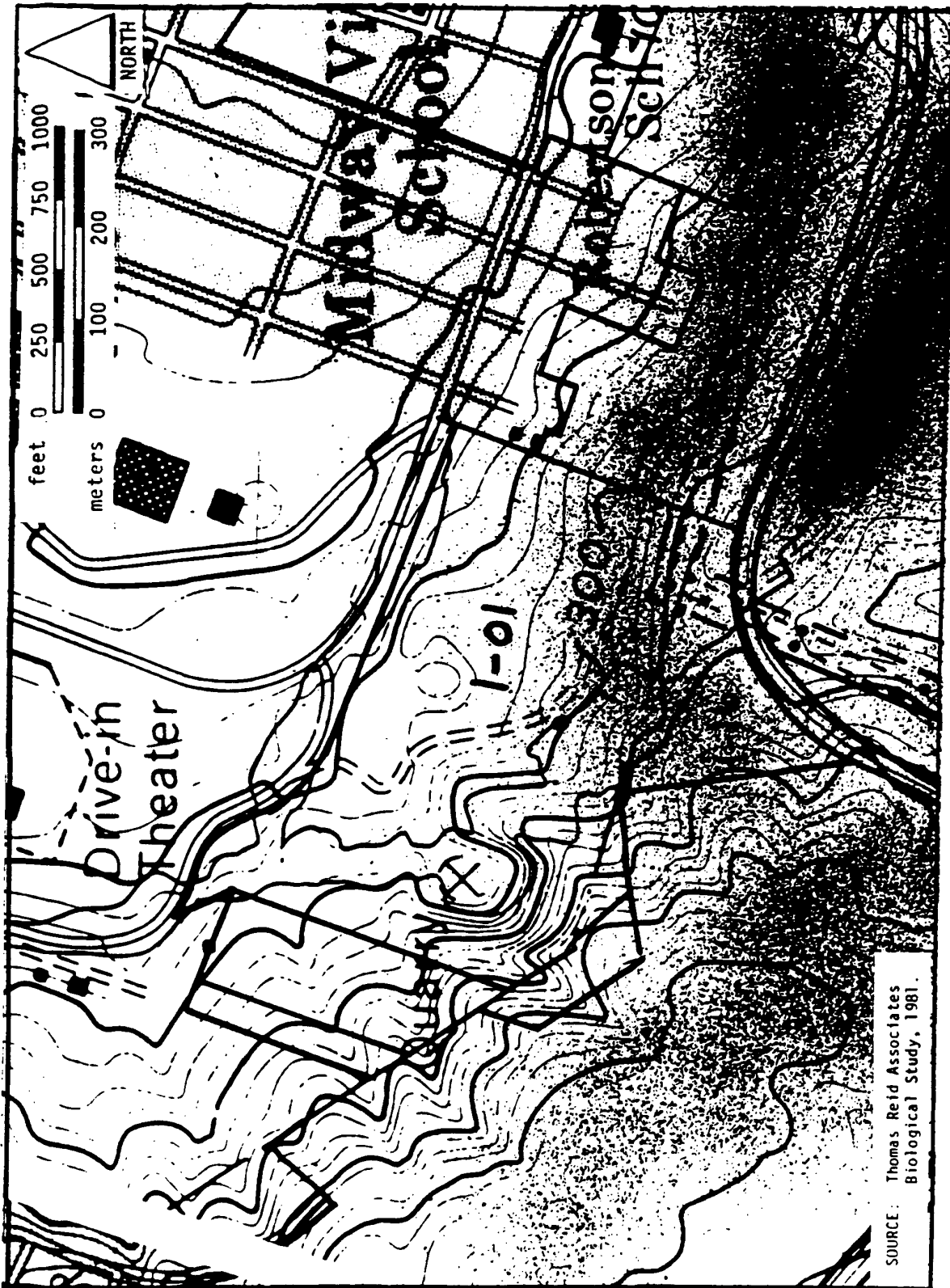


FIGURE 1-16 E, PARCEL V
GENERAL POPULATION AND HABITAT DISTRIBUTION, 1981 -- CALLIPPE SILVERSPOT

