

ADMINISTRATIVE PARCELS – SOUTHEAST RIDGE

Planning Area: Southeast Ridge (2)

Administrative Parcel: Hillside School (06)

Location and description: This parcel consists of the school grounds adjacent to Hillside Boulevard at the western edge of the South Slope Development. The majority of the site is developed with the school buildings and playing fields (See Figures 2-06 A-C).

Ownership: The parcel is owned by the South San Francisco Unified School District.

Project: The existing use as school grounds.

Status: This parcel is unplanned.

Biological Issues: Because most of this parcel has been developed, it contains only marginal habitat for the species of concern. The areas adjacent to the school, however, contain somewhat better butterfly habitat (See Figures 2-06 D-E). While future development of the school grounds may not remove butterfly habitat on the site, maintenance practices such as the application of pesticides may indirectly impact nearby habitat upslope.

Impact: Indeterminate

HCP Objectives -- Specific Conservation Needs: No other development has been proposed for this parcel, therefore treatment is not required. However, in order to insure the conservation of adjoining butterfly habitat, the South San Francisco Unified School District should notify the Plan Operator of current maintenance practices which may effect the species of concern, and of any future changes in these practices or in land use.

Operating Program

Obligations: The South San Francisco Unified School District has the following obligations:

1. Participation in the regulatory provisions of the HCP.
2. Notify the Plan Operator of current maintenance practices which may have a harmful effect on the species of concern, such as application of pesticides or herbicides.
3. Obtain approvals of any changes in plans or other uses which would alter the current state of the parcel as required by Chapter Five (F) (4) .

The Plan Operator has the following obligations:

1. Timely response to SSFUSD's submittal of information which require Operator review and approval.

Management Units:

1. **2-06-01.** This Management Unit contains the entire parcel.

FIGURE 2-06 A, HILLSIDE SCHOOL
PARCEL LOCATION

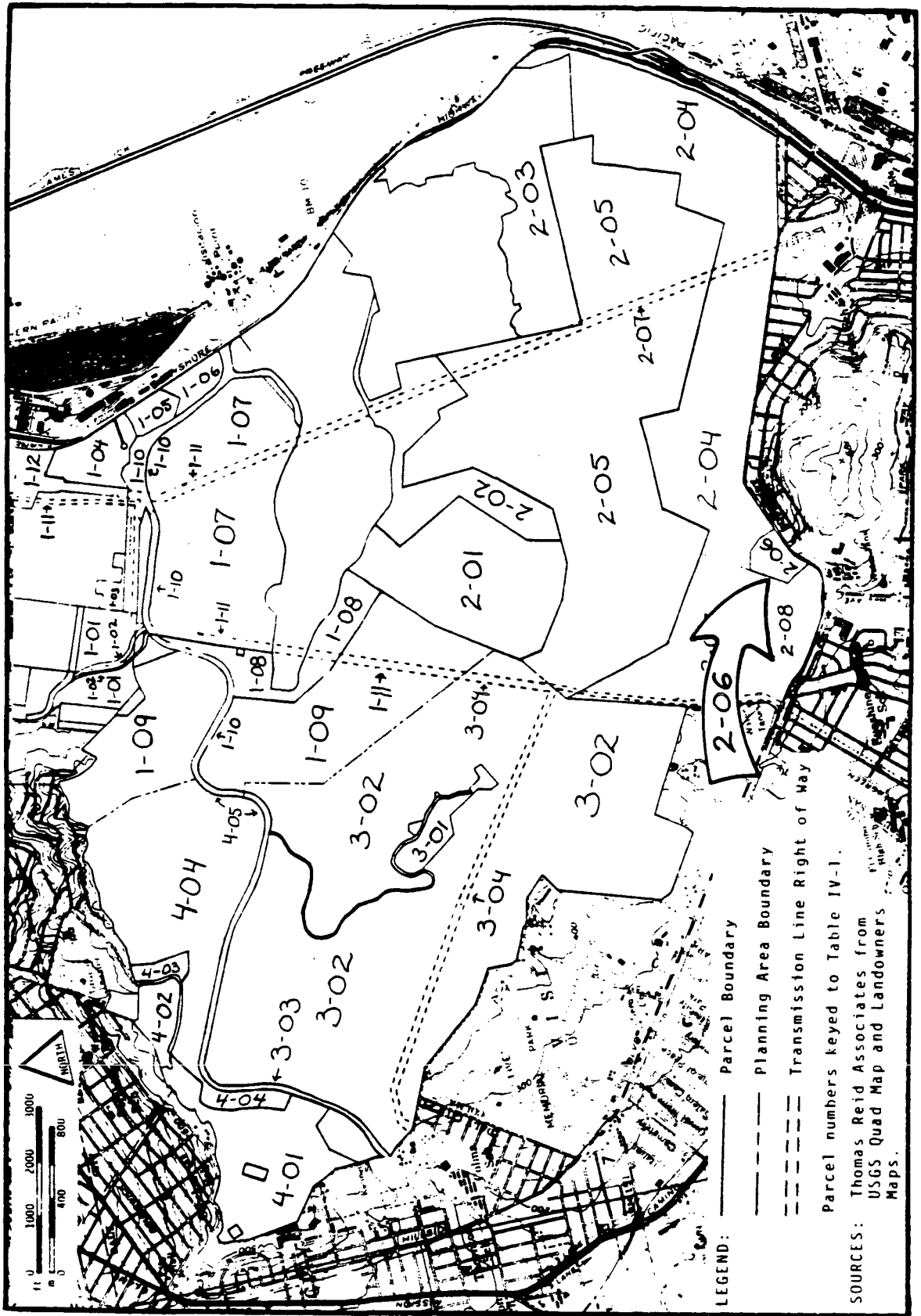


FIGURE 2-06 B, HILLSIDE SCHOOL
PARCEL TOPOGRAPHY

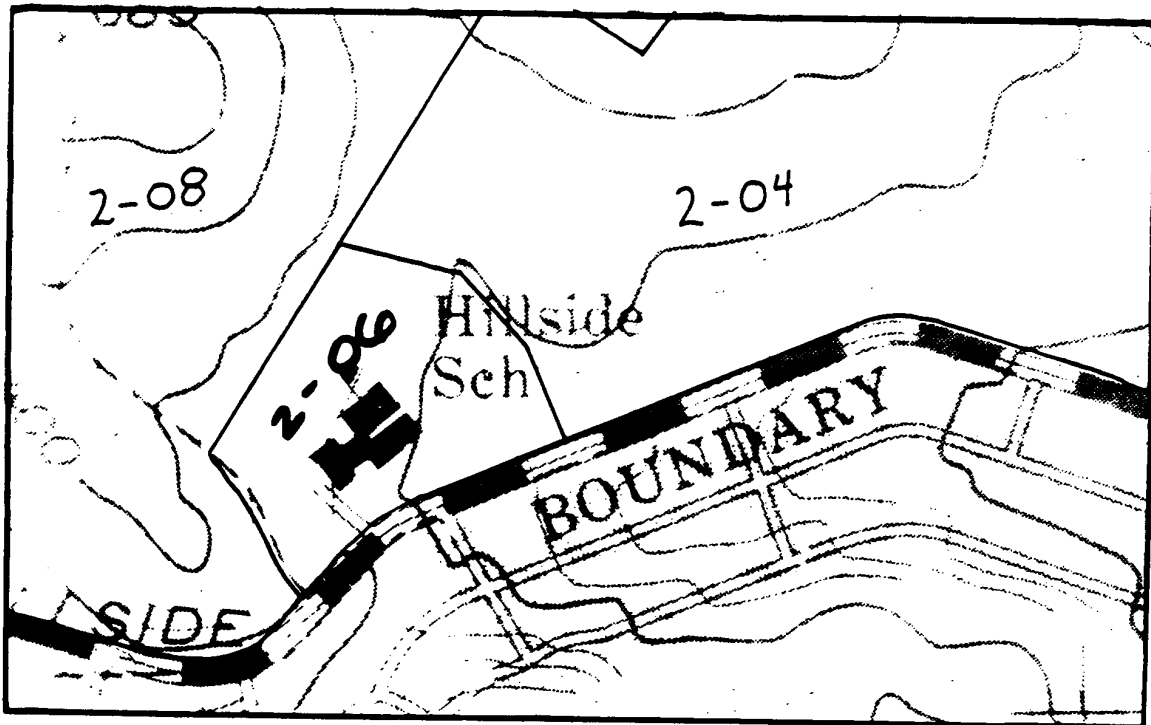
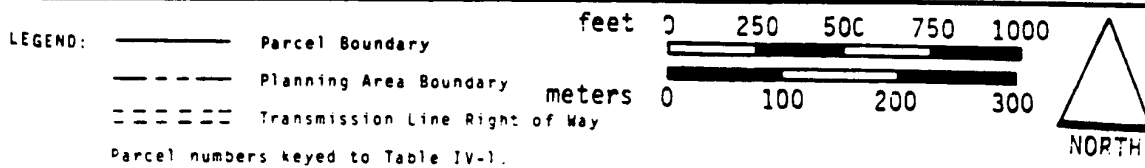
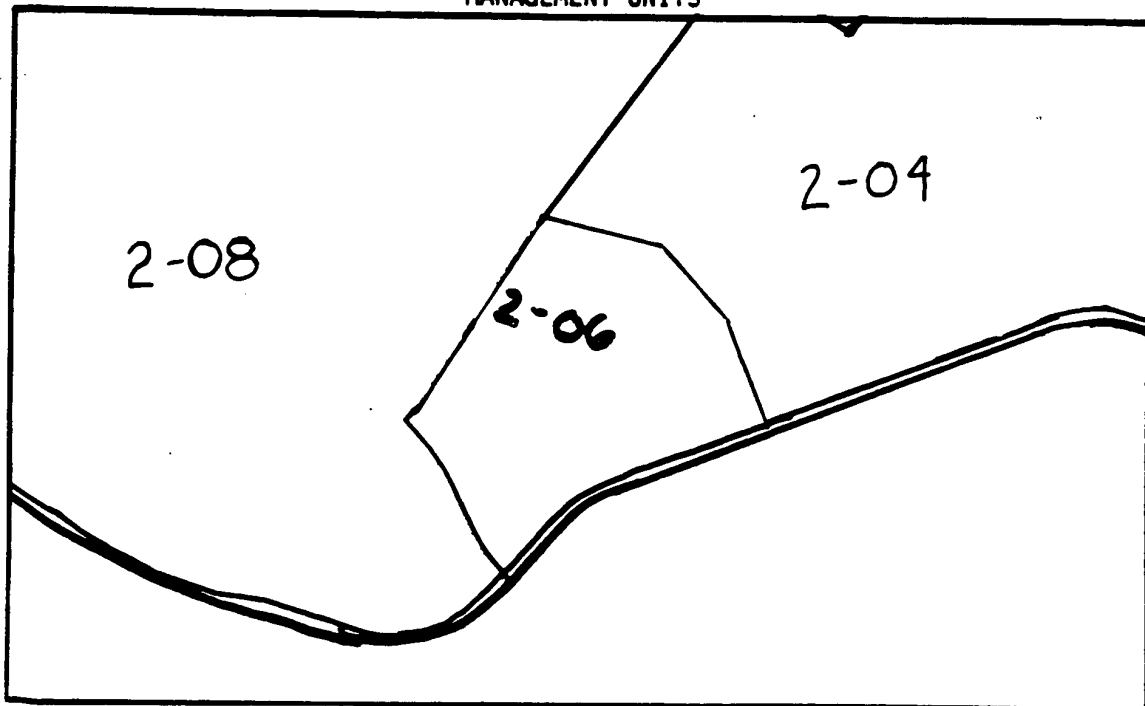
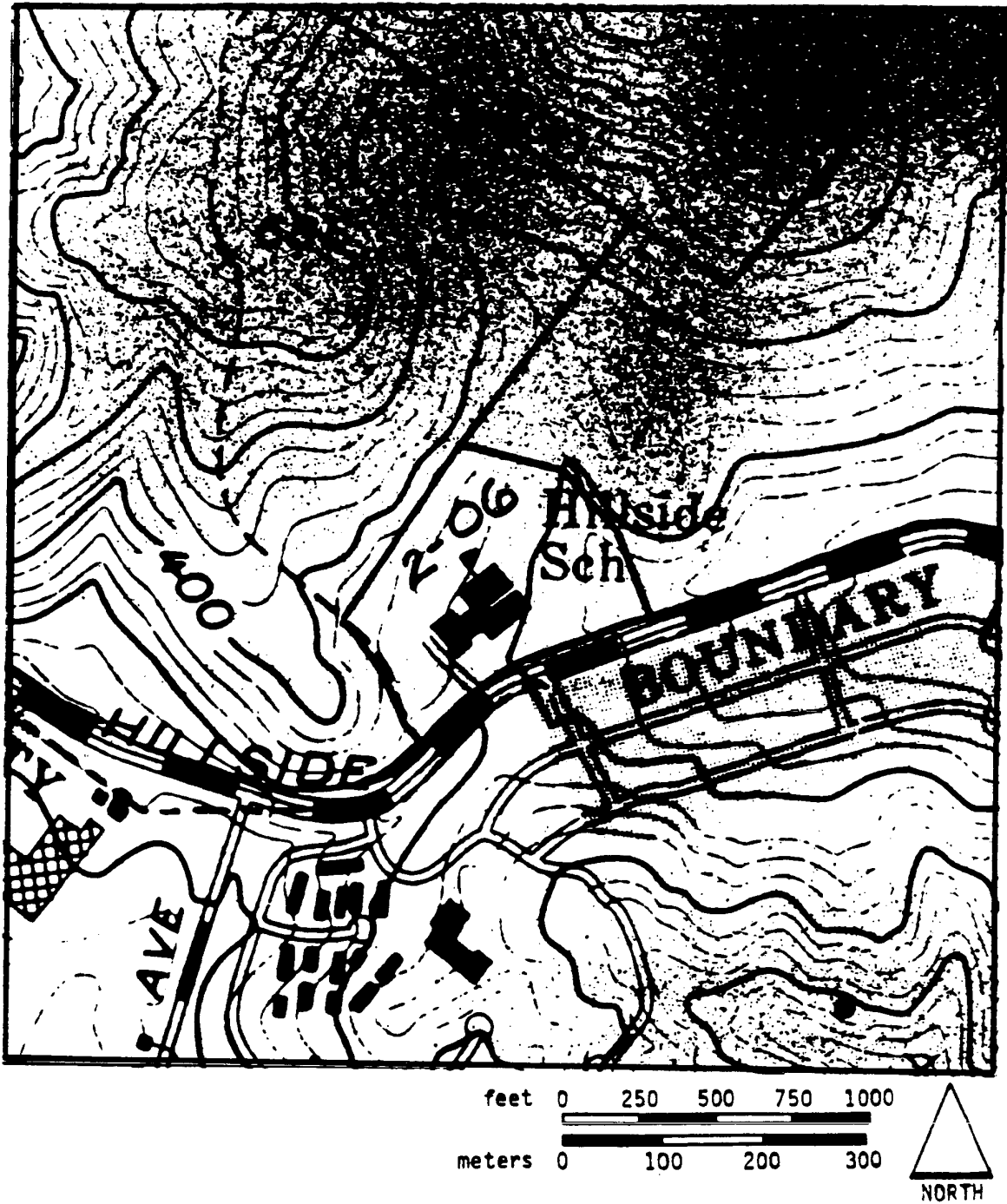


FIGURE 2-06 C, HILLSIDE SCHOOL
MANAGEMENT UNITS



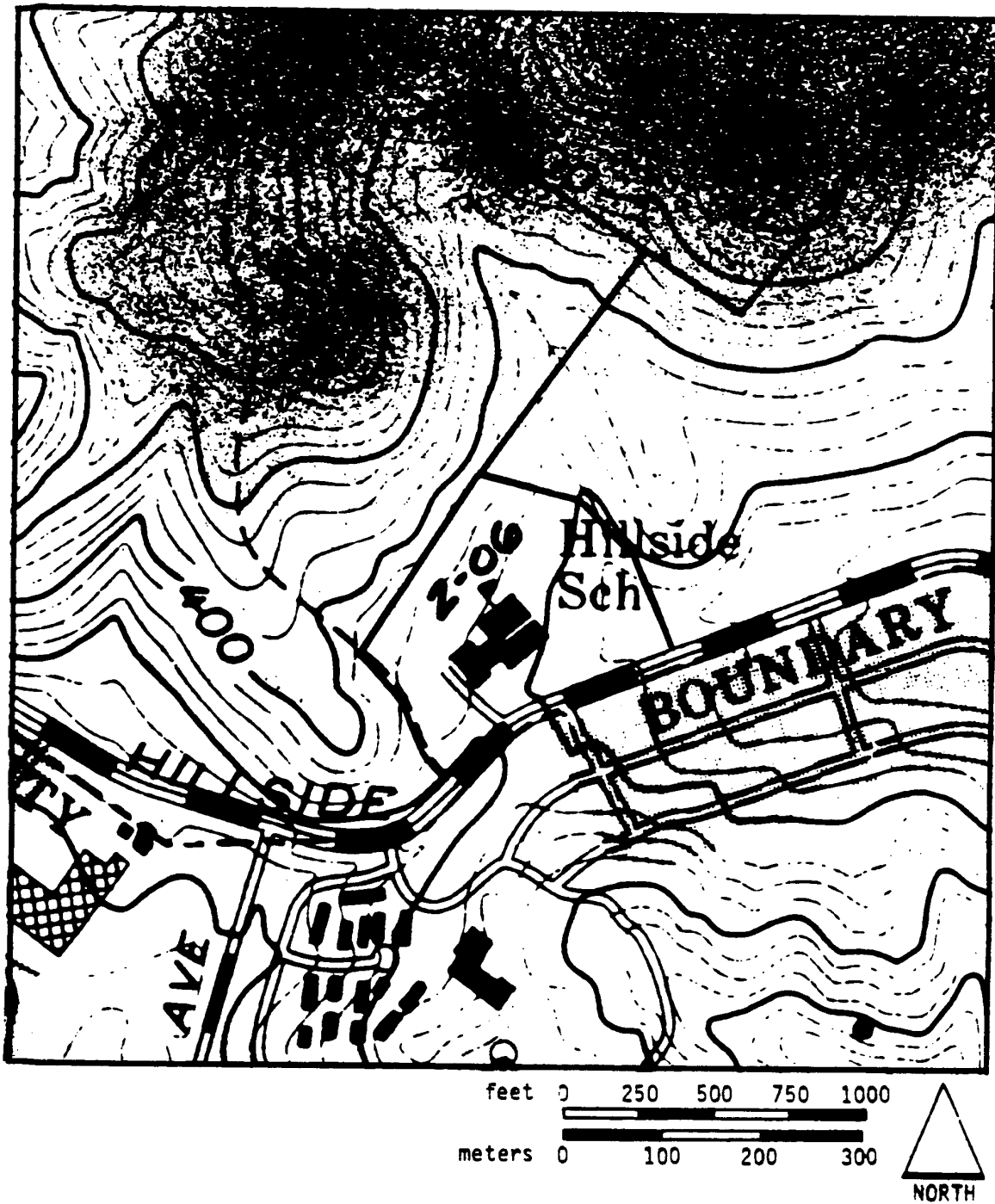
SOURCE: Thomas Reid Associates from
Assessors and Landowners Maps

FIGURE 2-06 D, HILLSIDE SCHOOL
GENERAL POPULATION AND HABITAT DISTRIBUTION, 1981 -- MISSION BLUE



SOURCE: Thomas Reid Associates
Biological Study, 1981.

FIGURE 2-06 E, HILLSIDE SCHOOL
GENERAL POPULATION AND HABITAT DISTRIBUTION, 1981 -- CALLIPPE SILVERSPOT



SOURCE: Thomas Reid Associates
Biological Study, 1981.